

Fieldpiece

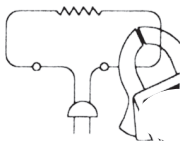
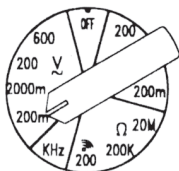
Model ACDC6 AC/DC CURRENT TO AC/DC VOLTAGE ACCESSORY

The ACDC6 enables most multimeters to measure AC or DC current up to 600A without breaking the circuit.

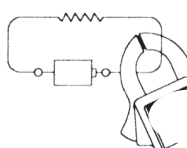
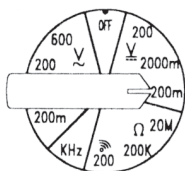
SETUP AND USE

1. Insert black lead into the COM jack and red lead into V- Ω jack.
2. Select mV range to read current directly. For

AC AMPS



DC AMPS



meters without mV range, select a voltage range and multiply displayed result by 1000.

3. Turn zero adjust knob until multimeter reads zero. In DC if clamp doesn't zero properly, open and close jaws several times first.



OPERATOR'S MANUAL

4. Clamp meter around single conductor and take reading. If meter overloads ("OL" or "1---"), select a higher range. For improved accuracy on low currents, loop conductor through jaws several times in same direction and divide reading by the number of loops.
5. In strong stray magnetic fields, zero the clamp near the conductor being measured.

BATTERY REPLACEMENT

Replace with 9V battery, NEDA 1604 type.

SPECIFICATIONS

General

Jaw opening: 30mm

LED indicators: green for "on", red for low batt.

Operating temperature: 0 to 120°F, 70%RH.

Storage temperature: -0 to 150°F, 80%RH.

Weight: 290g

Dimensions: 178 X 70 X 33 mm

Electrical (at 73 ± 9°C, 70% RH maximum)

DCA is + flowing from front to back of clamp.

Accuracy (add to multimeter)

DCA: ±2% reading ±2A (0 to 600A)

ACA (50 to 400 Hz):

±2% reading ±2A (0 to 400A);

±3% reading ±2A (400A to 500A);

±6% reading ±2A (500A to 600A).

Load resistance: minimum 10KΩ

Battery life: 100 hours typical with carbon-zinc.

Fieldpiece

Designed in USA

MADE IN TAIWAN

www.fieldpiece.com